



Instinct Guides You



Devon Road, Westham, Weymouth £260,000

- Refurbished Three Bedroom Home
- Generous Enclosed Rear Garden
- Contemporary Kitchen & Bathroom
- Bathroom & Cloakroom
- Well Presented Throughout
- Close To Bus Route
- Cul-de-sac Position
- No Onward Chain



Registration No. 08079158 Directors Mr Wilson, Mr Tominey

Courtesy Notice Upon using WilsonTominey as selling agents ensure we are made aware of contractual obligations you may be under. We can then proceed accordingly.

WilsonTominey Ltd
15 Westham Rd.
DT4 8NS

T 01305 775500
E sales@wilsontominey.co.uk
W www.wilsontominey.co.uk



Tucked away in a small cul-de-sac this beautifully presented semi-detached home combines contemporary living with everyday comfort. Offered with no onward chain, it features a stylish kitchen/dining room, modern bathroom, and a generously sized enclosed rear garden.

Step inside to a bright and welcoming living room, thoughtfully designed with a useful understairs storage. The space is well-proportioned, offering ample room for furnishings and a cosy atmosphere in which to relax and unwind. The newly installed kitchen boasts sleek cabinetry, enhanced by tasteful marble effect panelling. A convenient cloakroom finished the ground floor.

Upstairs, you'll find three bedrooms and the family bathroom. Bedrooms one and two are well-sized doubles, with bedroom one enjoying a pleasant outlook over the rear garden. Bedroom three offers flexibility—perfect as a nursery, guest room, or home office.

The bathroom has been finished to a contemporary standard, featuring a bath with shower over, wash hand basin, and WC.

One of the home's standout features is the enclosed rear garden. A generous size with easy side access and a door leading to the kitchen. The garden offers an excellent space to entertain and offers a blank canvas ready for finishing touches.

Room Dimensions

Living Room 17'10" max x 11'8" max (5.44 max x 3.58 max)

Kitchen 18'4" max x 8'7" max (5.61 max x 2.62 max)

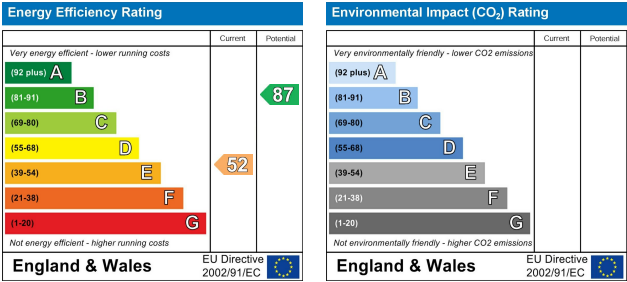
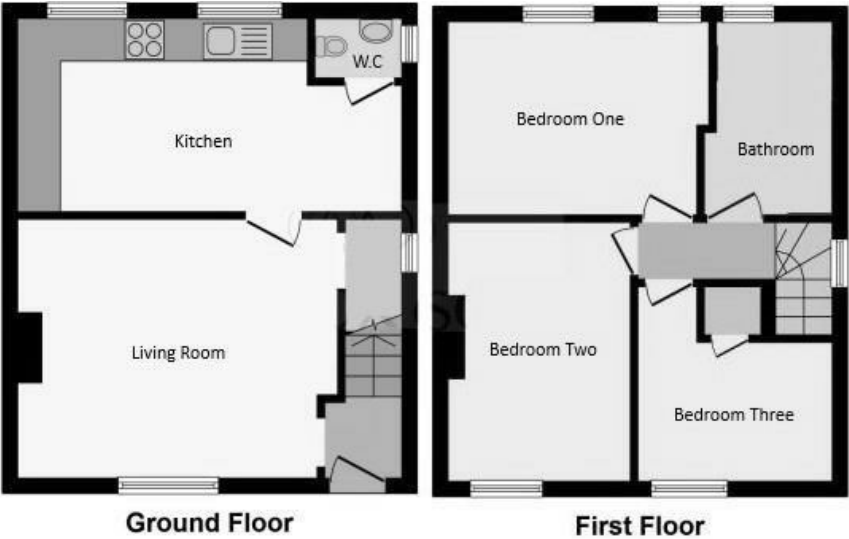
Bedroom One 12'0" max x 8'9" max (3.66 max x 2.67 max)

Bedroom Two 11'10" max x 8'5" max (3.63 max x 2.57 max)

Bedroom Three 8'11" max x 8'9" max (2.74 max x 2.67 max)

Bathroom

Cloakroom



Important Notice: Particulars are prepared for marketing purposes only and should not be treated as a statement of the condition of any building, fixture or appliance. All measurements, floor plans and lease/ maintenance are approximate and not to be relied upon. Purchasers should make their own checks before relying on any of the information provided herein. * For double glazing and gas radiator heating, it is where specified.